

Road to Indy IMS Test Regulations:

The following information pertains to logistics for the Road to Indy Test Scheduled for October 10th and 11th at the Indianapolis Motor Speedway Road Course.

Enter the Speedway from 16th Street at the Main entrance, please follow the Map provided.

Teams will be using the F1 Garages and Pit Lane.

Teams participating in Multi Series will be garaged together.

Credentials will be located in the Indy Lights Series Tech Trailer parked in the North West corner of the 5th Street Lot. (See Attached Map)

There will not be a rain date scheduled.

Load in: Will start at 12:00 PM Tuesday October 9th.

Track Walk: 3:00 – 5:00 PM Tuesday **walk only**, no vehicles, scooters, golf carts, or any other form of transportation.

Drivers meeting: 8:00 AM Wed Oct 10th in Suite # 501 directly above the F1 garages, this will include all drivers from all series in the same meeting.

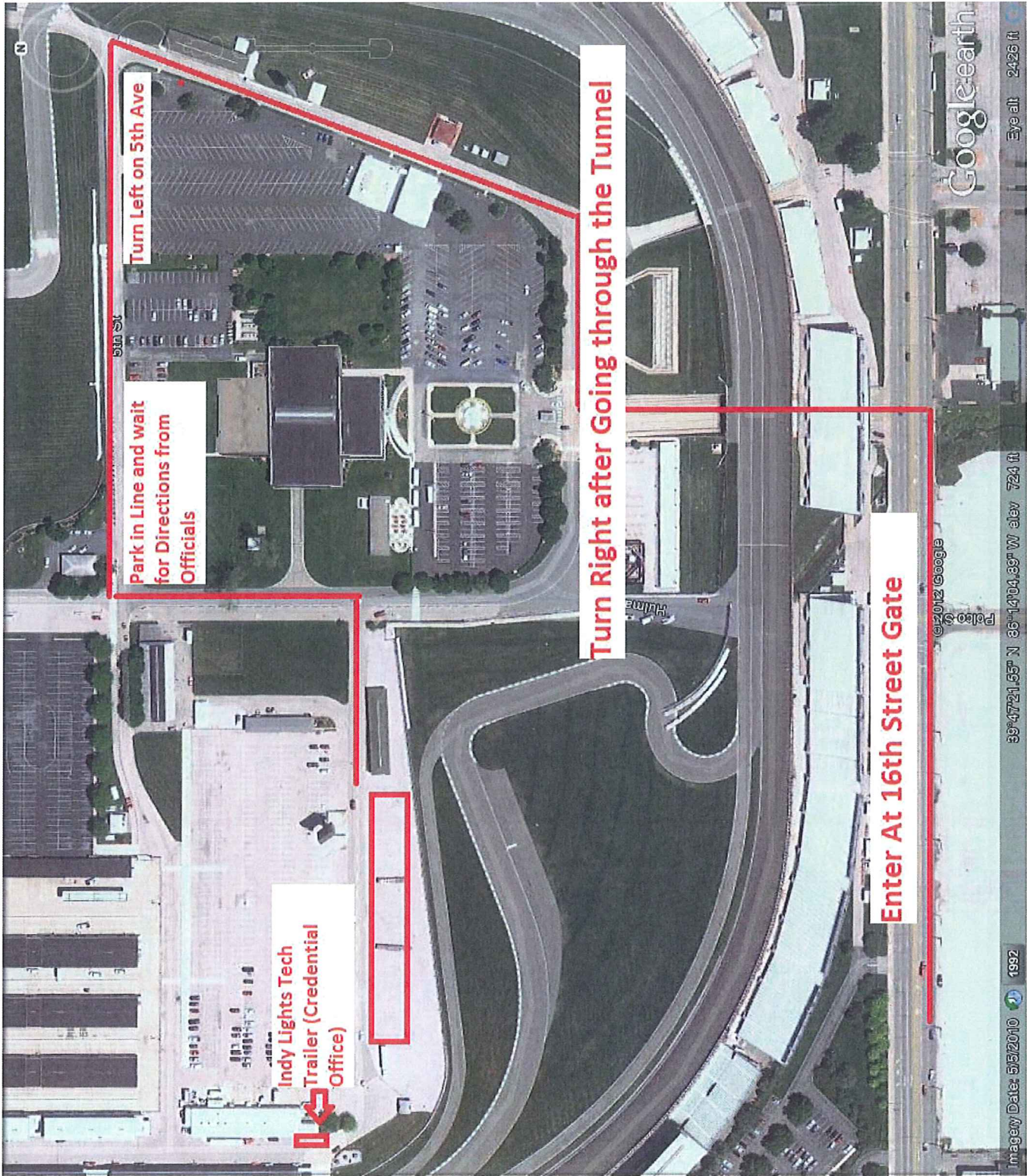
Spotters: 2 Spotter passes per Entry will be provided, these will allow access to Safe areas around the track, there will not be a designated Spotters location on the Pagoda

Track Distance: 2.5143 Miles.

S/F Line: Will be located on the back straight away.

Pit Lane Speed Limit: 45 MPH for all series, starting and ending at the Yellow Cones.

Fuel: IMS fuel station will be operating anytime Tuesday, and 8:00 – 10:00 AM Wed and Thursday. Please call Louie Parsons at 317-270-4752 if you have any questions.



Turn Left on 5th Ave

Park in Line and wait for Directions from Officials

Indy Lights Tech Trailer (Credential Office)

Turn Right after Going through the Tunnel

Enter At 16th Street Gate



SOUTH BLDG. TRACK SIDE

Firestone										NA			
1	2	3	4	5	6	7	8	9	10	11	12		

FIRESTONE INDY LIGHTS Garages

MIDDLE BLDG. TRACK SIDE

GoodYear													NA
13	14	15	16	17	18	19	20	21	22	23	24		

StonMazda Garages

NORTH BLDG. TRACK SIDE

Cooper										NA			NA
25	26	27	28	29	30	31	32	33	34	35	36		

USF2000 Garages



Timing and Scoring

Indianapolis Motor Speedway (RC) 2.5143 mi Main System Revised October 25th, 2011
Time-Line Information

Time Line Description	Name	2-way ID	Comments	Feet from S/F	Inches from S/F		
Track Time Lines							
SF (Start/Finish on back stretch)	SF	1	1	13276	159312	2.514394	
I1 (Intermediate 1)	I1	2	1	1342	16104	0.254167	
I2 (Intermediate 2)	I2	3	1 Alternate S/F	6602	79224	1.250379	
I3 (Intermediate 3)	I3	4	1	10638	127656	2.014773	
I4 (Intermediate 4)	I4	5	1	12288	147456	2.327273	
SFT (Start/Finish Trao)	SFT	6	1	13210.5	158526	2.501989	
Pit Time Lines							
PIC (Pit-In Commitment)	PIC	239	1	2388	28656	-0.452273	
SFP (Start/Finish Pit)	SFP	245	1	13276	159312	2.514394	
POB (Pit-Out Blend)	POB	251	1	1344	16128	0.254545	
Segment Name	Short Name	Entry Decoder	Exit Decoder	Comments	Feet	Inches	Miles
Track Segments							
SF to I1	S1	SF	I1		1342	16104	0.254167
I1 to I2	S2	I1	I2		5260	63120	0.996212
I2 to I3	S3	I2	I3		4036	48432	0.764394
I3 to I4	S4	I3	I4		1650	19800	0.312500
I4 to SF	S5	I4	SF		988	11856	0.187121
Total					13276	159312	2.514394
Track Trap Segments							
SFT to SF	TSF	SFT	SF		65.5	786	0.012405
Pit Segments							
PIC to SFP	P1	PIC	SFP		2388	28656	0.452273
SFP to POC	P2	SFP	POC		1344	16128	0.254545
Total					3732	44784	0.706818
Pit Trap Segments							
None						0	0.000000
Total					0.0	0.0	0.0
Logical Segments							
Lap	L1	SF	SF		13276	159312	2.514394
PIC to POC	L2	PIC	POC			0	0.000000
POC to SF	L3	POC	SF		11934	143208	2.260227
SF to PIC	L4	SF	PIC		10638	127656	2.014773
POC to I2	L5	POC	I2		5260	63120	0.000000
I2 to PIC	L6	I2	PIC		4036	48432	0.764394
POC to PIC	L7	POC	PIC		10946	131352	2.073106



Timing and Scoring

Indianapolis Motor Speedway (RC)

2.5143 mi

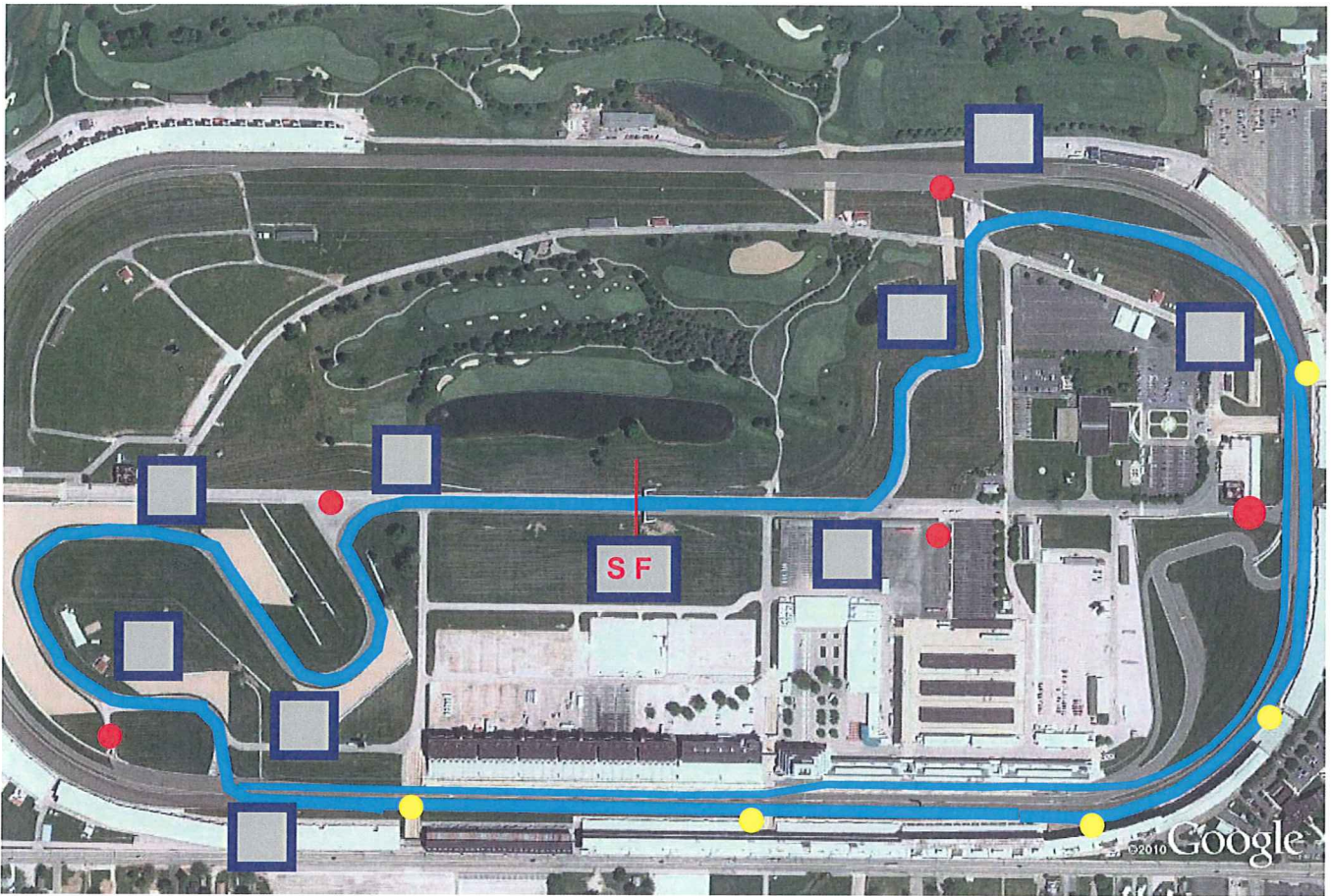
Track Schema

Revised October 25th, 2010



Indianapolis Motor Speedway RC - 2.5143 Miles

Revised October 25th, 2011



● Track Lights

● Response Vehicles

□ Corner Stations